



National Atmospheric Deposition Program

**2013 Annual Meeting and Scientific Symposium
Western U.S. Monitoring and Analysis: Progress and Current
Issues**

**Park City Marriott, Park City, Utah
October 8-11, 2013**

**UNIVERSIDAD NACIONAL AUTÓNOMA DE MÉXICO
CENTRO DE CIENCIAS DE LA ATMÓSFERA
SECCIÓN DE CONTAMINACIÓN AMBIENTAL**

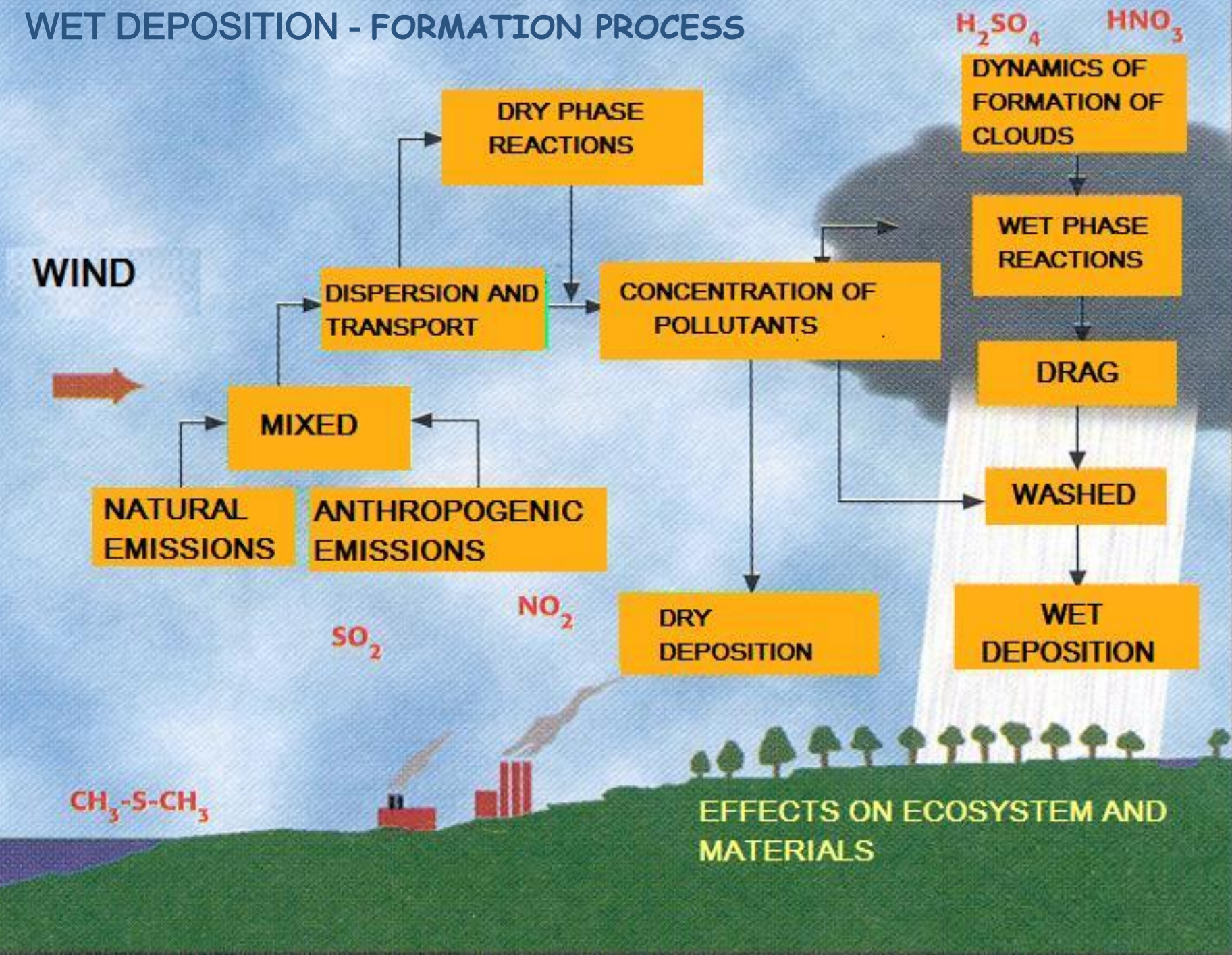
ACID WET DEPOSITION IN THE MEXICO CITY METROPOLITAN ZONE (MCMZ).

**Humberto Bravo A.* , Rodolfo Sosa E.* ,
María del Carmen Torres B.* , Pablo Sánchez A.* , Ana Luisa Alarcón J.*
Armando Retama H.** , Olivia Rivera H.****

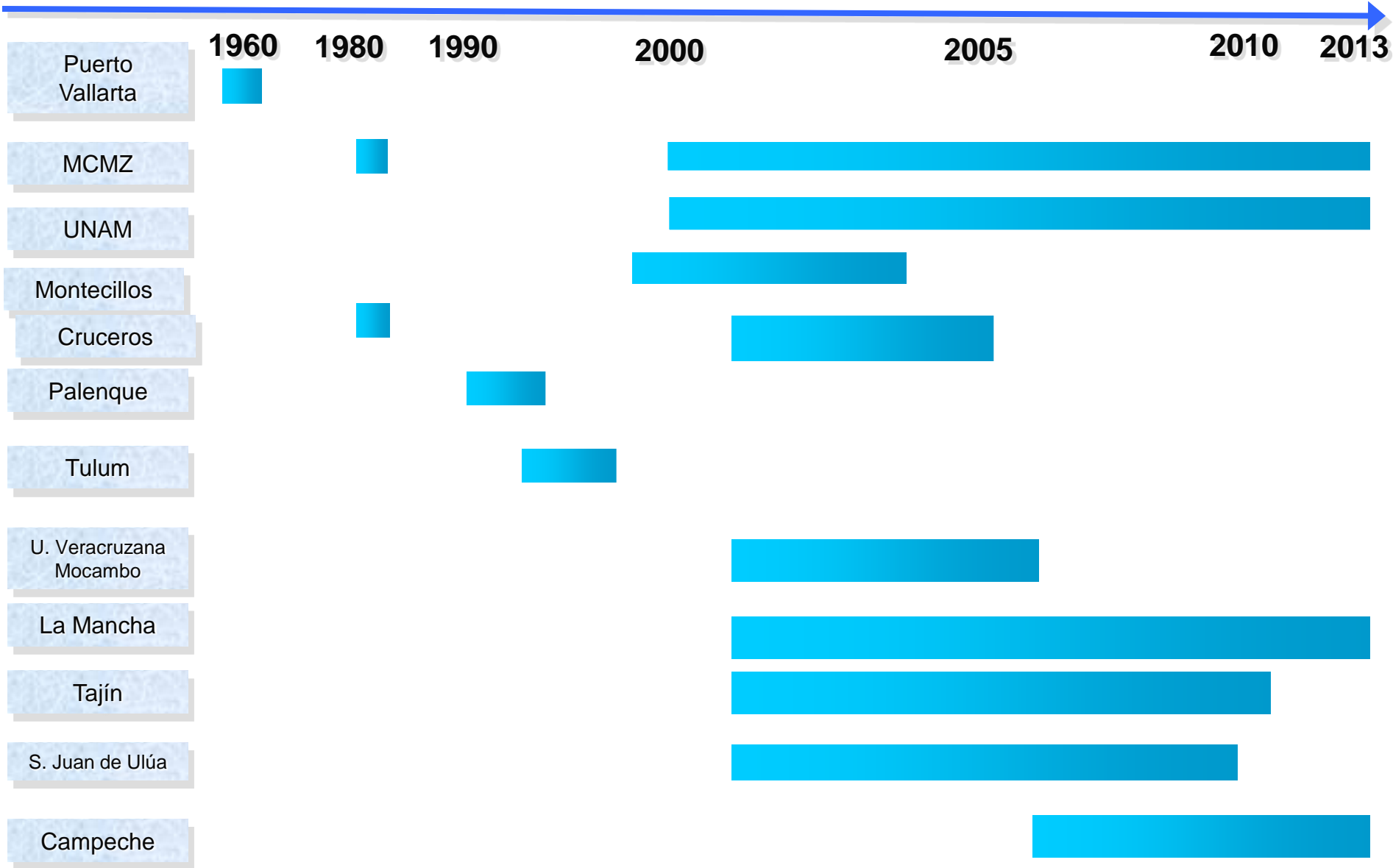
** Sección de Contaminación Ambiental, Centro de Ciencias de la Atmósfera, UNAM.*

*** Secretaría de Medioambiente, Gobierno del Distrito Federal, México.*

WET DEPOSITION - FORMATION PROCESS



Chronology acid rain studies in Mexico



Sampling Acid Deposition Network in Mexico





Rain Colector
and TSP

SCA/CCA/UNAM
NOAA
Secretaría de
Marina

1986
Gulf of Mexico
Cruise



B/O JUSTO SIERRA, UNAM
Gulf of Mexico Cruises

Weather Station

Rain Colector
and TSP

Sampler to COV's

O₃ Analyzer

Rain Gauge
and
manifold
sampler

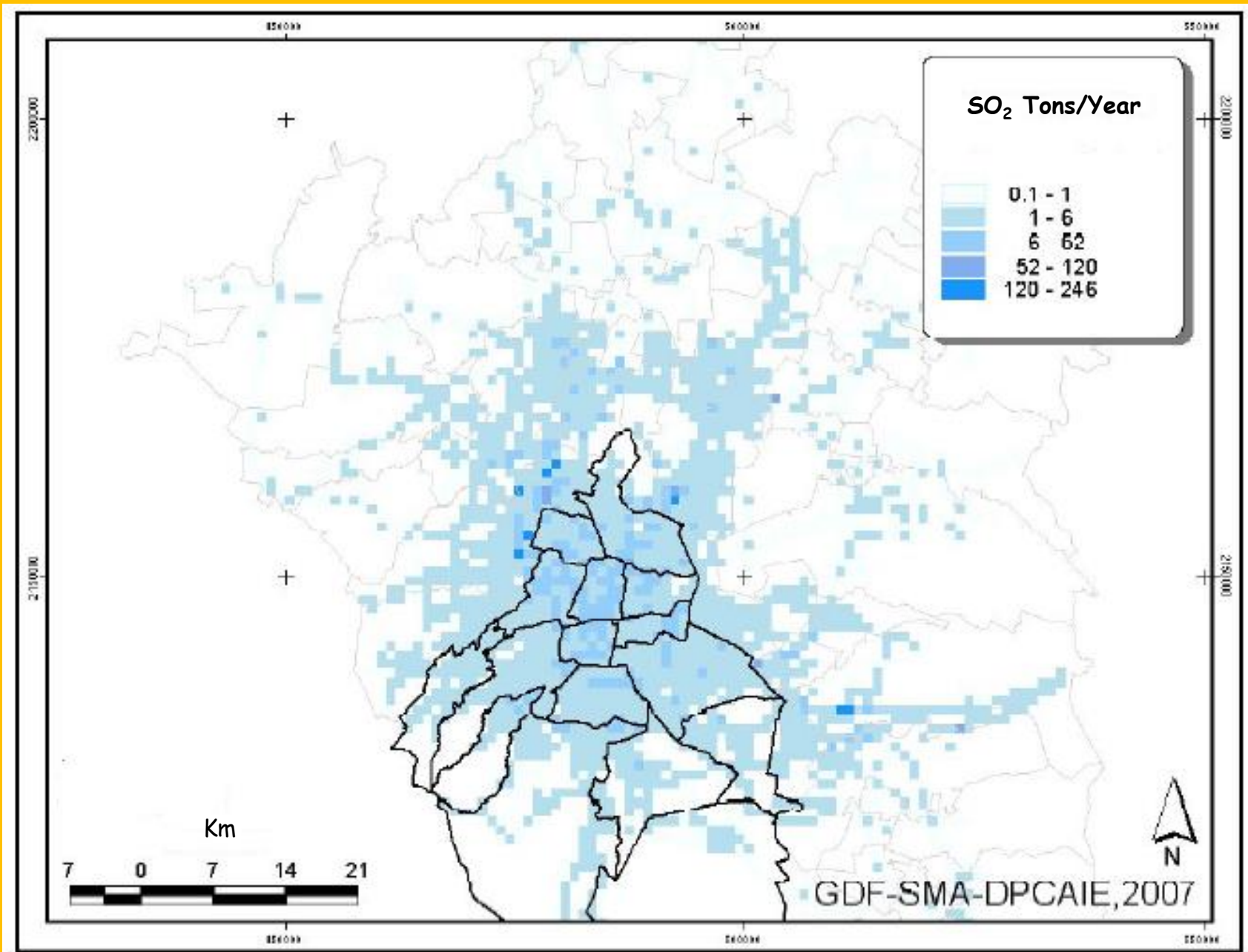
Sampler to
Polinuclear
Compounds



Gulf of Mexico Cruise



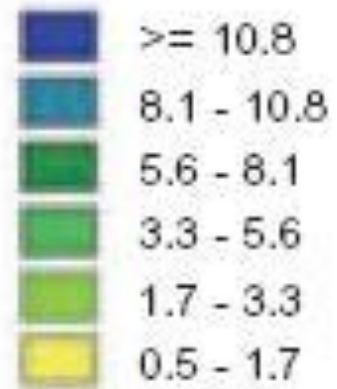
SO₂ emissions in MCMZ





Wind Velocity

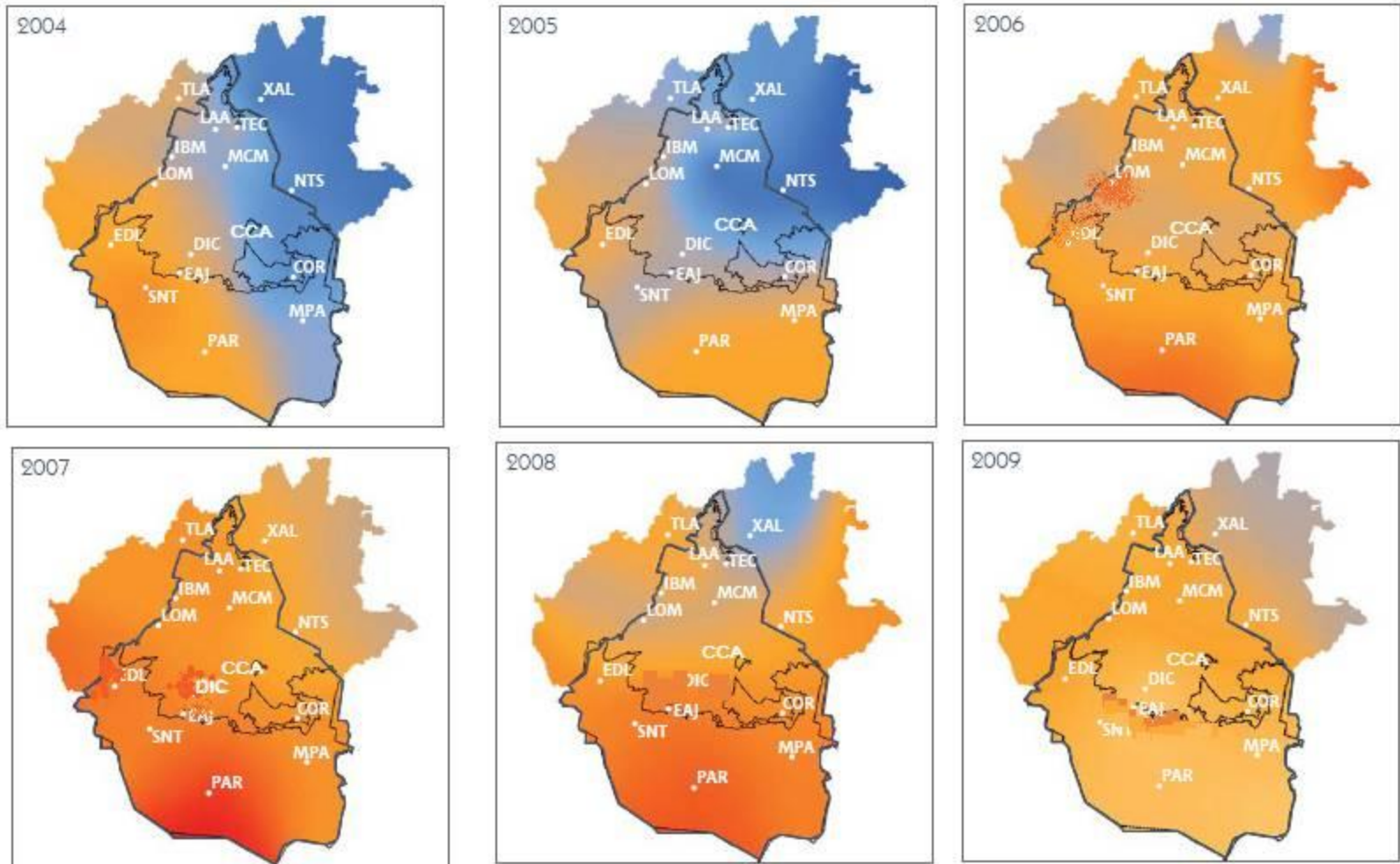
(m/s)



Calms: 2.33%

Prevailing winds 10:00hs to 13:00hs, MCMZ.

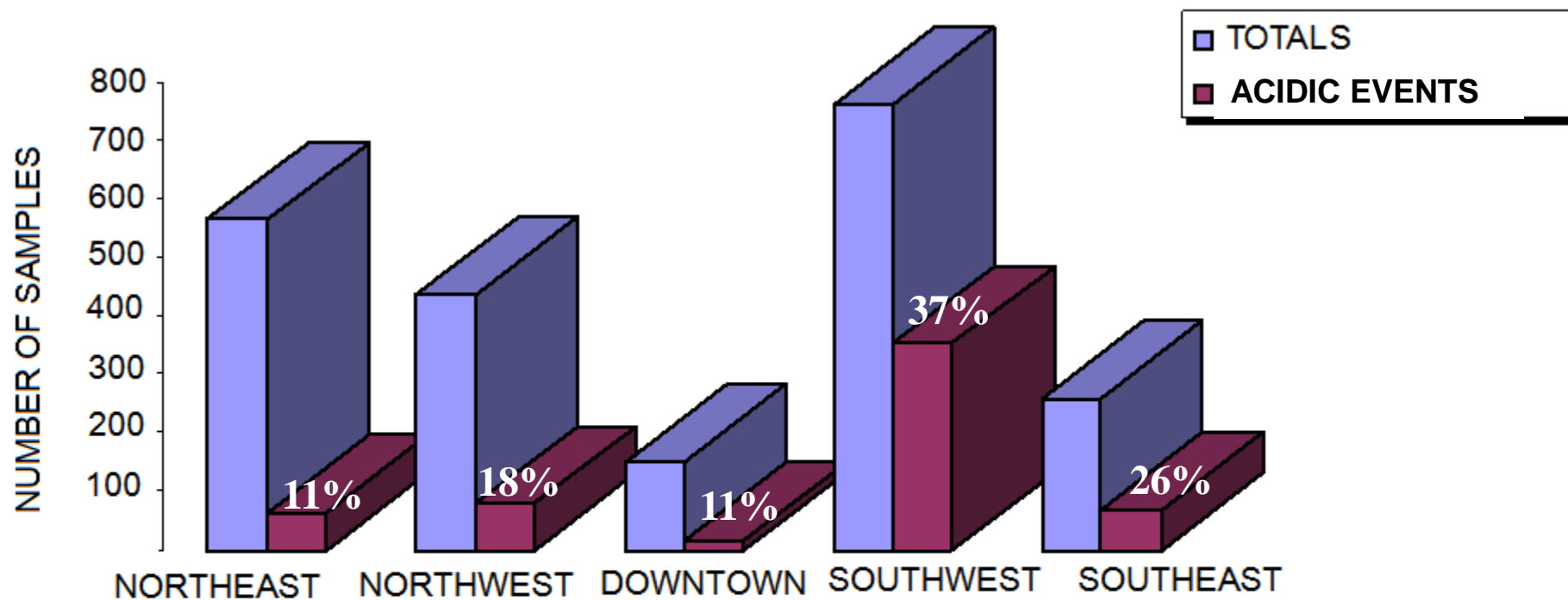
pH DISTRIBUTION



Source: SMA. Informe anual de Calidad del aire 2009.



WET DEPOSITION EVENTS IN MCMZ 2003-2009 SAMPLING CAMPAIGN



CONCLUSIONS AND RECOMMENDATIONS

- The acidity increased from the North to the South part of the Metropolitan Area. An annual acidity of 4.16 was recorded at the LOM Station in the Southwest region (2006).
- The acidic samples collected in the Southwest represent 37% of all samples collected in this region. The PAR station had more of the acidic events.
- After 2003, there was an increase in the acidity in all sampling sites.

CONCLUSIONS AND RECOMMENDATIONS

- The ratio of sulphate with H^+ ion, displays a maximum of 45% for the Southwest and 25% for other regions.
- It is recommended to identify the source of the precursors of acid wet deposition with the application of back trajectory model.
- It is recommended that Latin American Countries follow strict protocols for sampling and analysis to obtain data which can be compared at national and international levels.

THANK YOU!

